



# WILDERNESS RECORD

PROCEEDINGS OF THE CALIFORNIA WILDERNESS COALITION

Non-Profit  
U. S. POSTAGE  
PAID  
Permit No. 34  
Davis, Ca

ISSN 0194-3030

Vol. 6

P.O. Box 429, Davis, CA 95617

March-April 1981

No. 2

## Congressional Hearing on Burton Bills

This hearing originally was scheduled for May 1 with a comment deadline of May 10. This has been reset to a hearing on May 22 with a new written comment deadline of June 1.

A hearing has been set for May 22 on the California Wilderness bills of Phillip Burton, H.R. 856 and H.R. 859. The hearing before the Public Lands Subcommittee of the House Committee on Interior and Insular Affairs will be in Weaverville, Trinity County.

At stake will be California's 6.3 million acres of national forest roadless lands. The Burton bills are similar to last year's House-passed H.R. 7702, a compromise measure that would have designated 53 areas totaling 2.1 million acres as wilderness in the national forests of California. This previous bill died

in the U.S. Senate last fall.

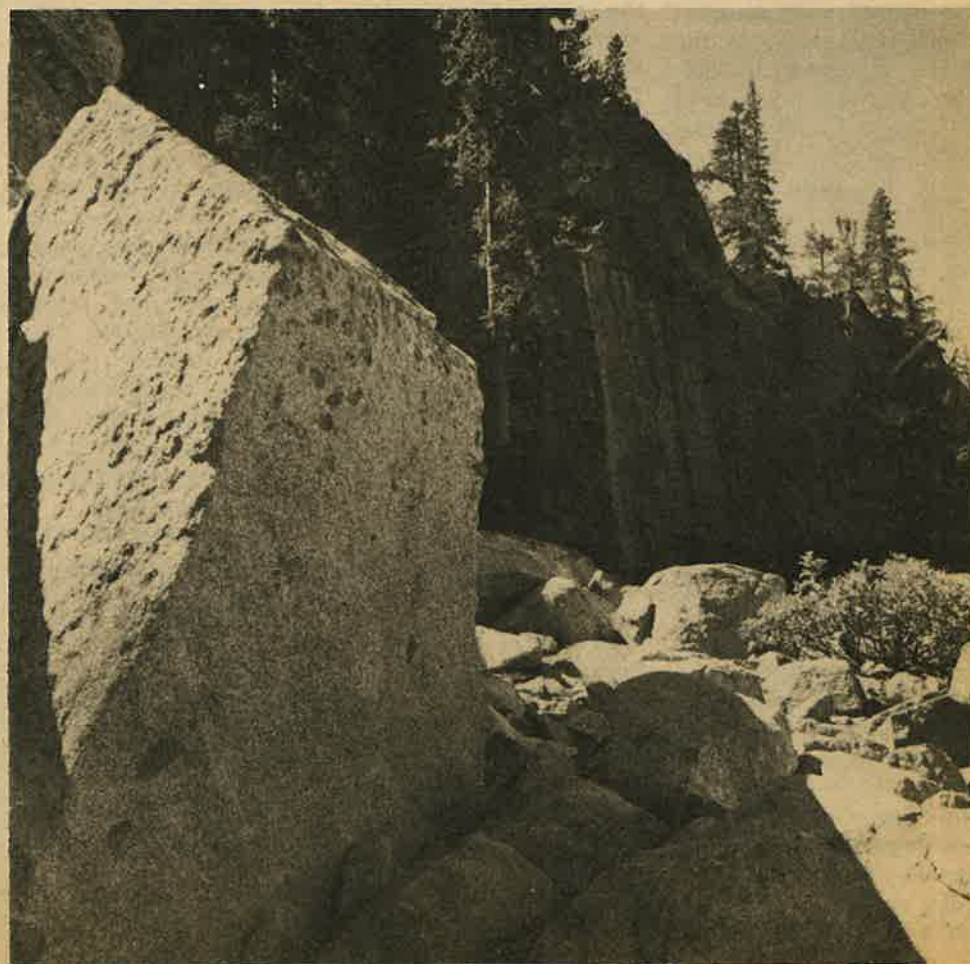
Many citizens from the northern part of the state are expected to testify on behalf of wilderness. Wilderness opponents, especially the timber industry, already are lining up witnesses. Many industry spokespeople are expected to lobby for much less wilderness than last year's compromise bill.

To counter this whittling away of the wilderness resource, the Trinity Wilderness Coalition is proposing additional wilderness areas in Northern California. Many of these areas were in Burton's original legislation two years ago but lost through the compromising political process.

In addition to Burton's bills, Representative Eugene Chappie has introduced H.R. 3053, a bill

to "release" Giddy Giddy Gulch at Mt. Shasta from further wilderness consideration. Giddy Giddy Gulch would be developed as part of a new ski area on the mountain. Although opposed by conservationists, this area already was deleted from the Mt. Shasta wilderness in the Burton Bill. Chappie apparently wants to rush this particular release area through Congress independent of the entire statewide bill.

In addition to testimony, the Subcommittee will accept written comments through June 1. Letters may be sent to The Honorable John Seiberling, Chairman, Subcommittee on Public Lands, Committee on Interior and Insular Affairs, U.S. House of Representatives, Washington, D.C. 20515.



Dardanelles Roadless Area, Eldorado Nat. Forest

Photo by Kathy Blankenship

## 2nd Annual Conference Activists Meet in Kernville

The Kern Plateau Association will host the 2nd annual South Sierra regional environmental conference/workshop on May 8, 9, and 10 in Kernville, at the Kernville Elementary School. The first meeting, in October, 1979, drew over 200 people from all over the State, and it is hoped that this year's gathering will be even more successful.

Speakers and presentations will focus on environmental issues affecting the southern Sierra Nevada, its eastern slope, and the northern Mojave Desert. In addition, land and water conservation issues in the southern San Joaquin Valley will be addressed, in view of their significant effects on

the mountain and desert areas nearby.

Featured speakers will include Joe Fontaine, national president of the Sierra Club, Martin Litton, long-time south Sierra conservationist, Mark Dubois, founder of Friends of the River, Gene Tackett, Chairman of the Kern County Board of Supervisors, Phil Pister, California Department of Fish and Game, and Jim Eaton of the California Wilderness Coalition.

Numerous presentations will be given on specific wilderness areas, wild rivers, wildlife issues, and other resources in the region. Saturday evening will feature an auction of works by noted outdoor

artists Susan Wilhite and Roy Purcell.

Sunday, May 10 is slated as the day for conference participants to convene for discussions about opportunities for involvement in the issues presented. Also offered will be workshops on specific activist skill areas.

The registration fee for the conference is an economical \$5. Pre-registration is encouraged, and checks should be made payable to the Kern Plateau Association. To register, or for more information about the conference, contact Dave Brown, the Conference Coordinator, at P.O. Box 886, Kernville, CA 93238, or call (714) 379-4474.

### Anti-Wilderness Bill

## Hayakawa Strikes Again

In an anti-wilderness offensive expected by conservationists since last November, U.S. Senator S.I. Hayakawa (R-CA) recently introduced what has been termed "the most radical timber industry initiative thus far in the legislative battle over congressional consideration of roadless lands in our National Forests."

The bill—S. 842—is known as "The RARE II Review Act of 1981," and is co-sponsored by James McClure (R-ID), Jesse Helms (R-NC), Howell Heflin (D-AL), and Steve Symms (R-ID).

S. 842 would, among other things, place stringent new deadlines on wilderness consideration for RARE II roadless areas; forbid any court from reviewing the RARE II environmental impact statement; and prohibit future consideration of National Forest lands for wilderness designation.

(RARE II is an acronym for the Forest Service's second Roadless Area Review and Evaluation process.)

Conservationists point to the deadlines proposed in

S. 842 as indicative of the timber industry's perception of its strength in the Senate. "They're not even trying to hide it any more," said California Wilderness Coalition Executive Director Jim Eaton, adding, "The industry is in for a fight—it still takes 51 votes to pass the bill."

The deadlines set in the bill would require that RARE II areas recommended for wilderness designation be acted upon by January, 1985 in the West and by January, 1983 in the East. It would also require that additional study of RARE II areas recommended for further planning be completed by September, 1985 and that any wilderness recommendation emerging from the "further planning" process be acted upon by January, 1988.

The bill's attention to judicial interference in the RARE II process appears to relate to a federal judge's 1980 ruling that 47 RARE II study areas in California would have to be reconsidered for wilderness recommendation because the Forest Service's initial studies of the areas had been hastily prepared and

inadequate (*California v. Bergland*).

The only exception to the bill's proposed freeze on judicial review of RARE II is a suit brought by the timber industry in North Carolina. Conservationists feel that the Hayakawa bill attempts to shut off a legitimate avenue of appeal in their efforts to win reconsideration and protection for many RARE II areas. Noting that they have not filed a lawsuit over RARE II, conservationists charge that they are being blamed by the timber industry for the embarrassment and delay caused by *California v. Bergland*, a lawsuit filed by the State of California.

Other aspects of the bill of great concern to conservationists are its effects on existing multiple-use forestry laws and its apparent rejection of so-called "sufficiency" language compromise, which was used in the previous Congress in legislation affecting more than one-third of the nation's RARE II acreage.

The most notable law affected by the bill's passage would be the National Forest Manage-

ment Act (NFMA). By permanently banning wilderness consideration by the Forest Service during the current Forest Planning process, much of the protective aspect of NFMA would be eliminated, according to conservationists. Speaking in general terms, Eaton urged against the bill's proposed amendments to NFMA, calling it "a crucial piece of public land legislation, one that cannot be tampered with."

Conservationists are

angered by the Hayakawa bill's abandonment of the principles agreed upon in a compromise reached with the timber industry last year, the result of which was "sufficiency" language. Like S. 842, this language prohibited further legal action over RARE II, but it did so only in the context of an acceptable wilderness bill for a given state. In addition, sufficiency language neither mandates development nor amends existing forestry laws, both of which are proposed in S.

842. The Bill has been jointly referred to two committees of the Senate—Agriculture, and Energy and Natural Resources—where Hayakawa and the co-sponsors of the bill have a certain amount of clout. Senator Helms is the chairman of the Agriculture Committee. Hayakawa chairs that committee's Forestry Subcommittee, on which Heflin also sits. McClure is chairman of the Energy and Natural Resources Committee.

# Coalition Report

By Jim Eaton

It is with great sadness that we report the deaths of two leaders of the cause to preserve wilderness.

Harold E. Thomas of Clovis passed away in February. Hal was a leader in the battle to save Kaiser Ridge, an effort that culminated with congressional designation of the Kaiser Wilderness in 1976. He then went on to form the Sierra Club's Mineral King Task Force; two years later he joined other wilderness leaders in celebrating the addition of Mineral King to Sequoia National Park.

Hal's work then went into the preservation of the San Joaquin roadless area. He helped form the San Joaquin Wilderness Association and was instrumental in building public support for this decades-old conservation fight. He lived to see the House of Representatives pass a bill with San Joaquin last fall, but the legislation was blocked in the Senate.

My fondest memories of Hal are of group discussions about wilderness around the campfire on chilly evenings. All of us would be bundled up to ward off the cold; even Hal would have on a down vest. But no

matter how frigid the night air, you could count on seeing Hal's bare legs sticking out from his hiking shorts.

Recognizing that Hal was seriously ill and to commemorate his vast conservation contributions, the Tehipite Chapter of the Sierra Club established the Harold E. Thomas Award. The intent is that the award shall be presented only upon appropriate occasions in recognition of conservation leadership of exceptional significance, involving multiple issues, and spanning a period of at least several years. Hal was the role model and the first recipient of the award.

Richard C. Sill, of Reno, was killed this spring in the crash of his light airplane. Dick's involvement in wilderness goes back for decades. At the time of his death he was a leader in the struggle to keep the MX from destroying much of Nevada and Utah.

In the late 1960's Dick served on the Board of Directors of the Sierra Club. His interest in wilderness and rivers were seen in his work to preserve areas like Granite Chief and Pyramid Lake. The difficult task of preserving Nevada's vast

wild lands found Dick doing battle with many different opponents; he countered arguments from the mining, livestock, and timber interests and was organizing citizens against the Air Force and their plan to develop a rapid transit system for nuclear missiles.

In my early days of learning to save wilderness, I was greatly influenced by Dick Sill. In many meetings of the Sierra Club's Wilderness Classification Study Committee we wrestled with the complex problems of wilderness management and preservation strategies. Dick always stressed positive solutions to problems, and I always enjoyed his high energy and innovative ideas, not to mention his quick wit and atrocious puns.

The environmental movement mourns the loss of Hal and Dick. Their love of wild places led them to make personal sacrifices to assure that these areas remain natural. Several wilderness areas are living memorials to their efforts; many other areas still are threatened, but Dick and Hal did their part to keep them wild so that we may continue where they left off.

# Trinity Wilderness Coalition Created

Stating their intention to work "on behalf of the 'Alps,'" wilderness activists in Trinity County have formed the Trinity Wilderness Coalition (TWC). The group will work for wilderness consideration for the Salmon-Trinity Alps as well as numerous smaller areas in the region.

In many cases, such as with Mount Eddy and the South Fork of the Trinity River, the group's position goes beyond the wilderness proposals offered in a 1979 compromise measure reached by a special county task force representing a variety of interests from conservation to logging.

Noting its support for the action proposed in last year's California Wilderness Act, the TWC claims that the bill abandoned a group of natural areas in the region; it has organized to work for their protection as well as for those areas proposed for wilderness in last year's bill.

Among the areas the

group feels should be re-evaluated on the basis of their wilderness potential—in addition to those named above—are Bonanza King, Board Camp Mountain, Penney Ridge, the East Fork of the Trinity River, and the Underwood and Chinquapin Roadless Areas. TWC representative John Amodio noted that the group feels that these and other areas have been denied protective consideration only because their wilderness values are not widely known.

"Without a caring constituency championing their cause," said Amodio in a prepared statement, "these areas will fall prey to the short-sighted mismanagement of the Forest Service and the timber industry."

Amodio charged that the timber industry has misrepresented the effects of wilderness designation of local economies. He dismissed as "public

relations poof" the industry's claim that the reduction in logging caused by wilderness designation of the above-named areas will cripple the industry and result in extensive job losses.

He added, "Consider this fact. If totally dedicated to timber production under a sustained yield program, the land in our proposals is capable of producing only enough timber to run the regional mills for five days per year at current production levels. Is it necessary for us to sacrifice this natural heritage for five more days of profit for the timber companies? We think not."

The group is calling on individuals interested in obtaining full protection for the Salmon-Trinity Alps to join their efforts. For more information, write to the Trinity Wilderness Coalition at Box 1, Trinity Center, CA 96041.

## Credit Where Credit Due

In our last issue we inadvertently gave full credit to John Hooper for the article on Forest Planning. Our apologies to Annie Stine who was a coauthor. Before being accused of sexism, let us point out that our secret source at the Sierra Club (JCH) gave us incomplete information. JCH will remain on probation until

Annie says otherwise.

\* \* \* \* \*

Last issue's article on the Desolation Wilderness by Archie Douglas contained incorrect information as to the available guidebooks for the area. Wilderness Press, a Coalition sponsor, publishes three books

covering all or part of Desolation. The most complete is *Desolation Wilderness and the South Lake Tahoe Basin*, by Jeff Schaffer. Second is *The Tahoe Sierra*, also by Schaffer. *The Tahoe-Yosemite Trail*, by Thomas Winnett, concerns this trail which passes through the wilderness. The author regrets the error.

## Coalition in Action

The Internal Revenue Service has granted 501 (c)(3) status to the California Wilderness Coalition. This will allow anyone donating money to the Coalition after Jan. 3 of this year to deduct the donation on their income tax. This also should ease the Coalition's quest for additional donations and grants to sustain our program.

Following the tax status change, the U.S. Postal Service ruled that the Coalition can mail at special non-profit third class rates. For newsletters and other bulk mail, this will result in a savings of more than 60 per cent.

We do use the mail! In

the first quarter of 1981, the Coalition mailed 2,145 pieces of bulk mail and 1366 pieces of first class mail. Rising postal rates have a major impact on our budget. Many of our wilderness alerts are on issues that have quick deadlines; first class is the only way to get the alerts to our letter-writing members on time.

Several alerts have been sent to members this year. We asked for letters to the National Park Service on the final plan for Lassen Volcanic National Park praising the plan in general but objecting to the rebuilding of the downhill ski facilities. We asked

people to write the State Parks Commission to support the proposed Sheep Canyon Wilderness, and the Commission acted favorably. Also, we sent a highly selective mailing to members in Assembly districts represented on the Natural Resources Committee to raise opposition to a package of Sagebrush Rebellion Bills.

Our Public Service Announcements (PSAs) have been played in Sacramento and the Bay Area, with a number of calls resulting from the message played on KCBS. We will begin sending PSAs to stations in the San Joaquin Valley soon.

## Sheep Canyon Wilderness

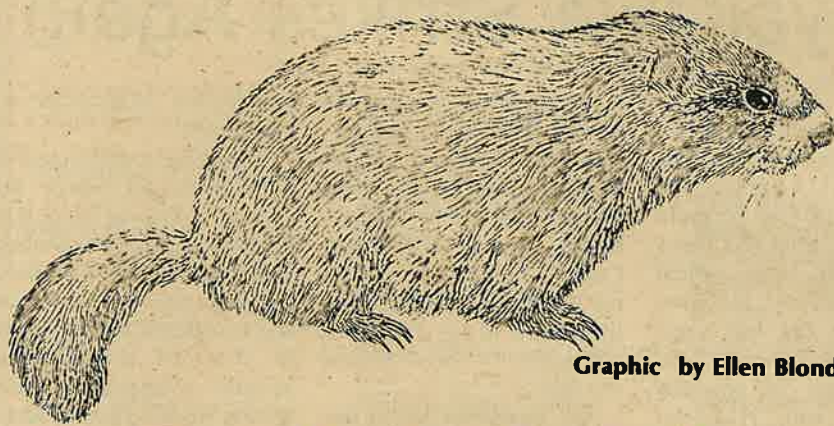
California's newest designated wilderness is the Anza Borrego Desert State Wilderness in the state park of the same name. Earlier articles referred to the area as the Sheep Canyon area.

The State Parks and Recreation Commission

had little difficulty deciding to designate the area as wilderness, but they had a lengthy discussion regarding its name. Various names were proposed and rejected until a solution was found. Since other roadless areas at Anza Borrego are

proposed for wilderness, all state wilderness areas there will be known as the Anza Borrego Desert State Wilderness. Different units may be administratively named, or the areas may simply be numbered.

The 57,000 acre state wilderness becomes the 3rd area in the State wilderness system. Numerous areas in state parks elsewhere in California have wilderness proposals awaiting Commission action, as well as some 175,000 acres of undesignated wild lands at Anza Borrego.



Graphic by Ellen Blonder

## Reader's Opinion

To the Editor:

I was happy to respond on the Sheep Canyon Natural Area/San Ysidro Roadless Area Wilderness proposal. Also got a notice from Beula Edmiston's group, Friends of Wildlife.

As I've mentioned to you

before, our primary wilderness concern in northern California is the Sinkyone Wilderness State Park. The coastal wilderness values in the "Lost Coast" area are truly outstanding, and well deserving of permanent protection.

The park needs an expansion of about 10,000 acres to include whole watersheds and ecosystems. At this time, the Parks & Recreation Commission is considering a core addition of 3800 acres of the finest coastal wilderness lands.

Your help would be very much appreciated on this since there are some very considerable anti-wilderness forces at work.

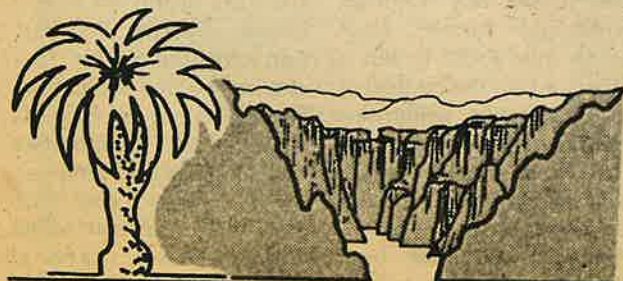
The two key contact people on the Sinkyone are:

Julie Verran (Sierra Club-Redwood Chapter), 639 Doyle Park Drive, Santa Rosa, California 95405, Phone: 707-527-8035  
Richard Gienger (Sinkyone Council), Box 283, White-thorn, California 95489, no phone

We are doing all we can through the Sierra Club and local organizations to preserve this magnificent coastal wilderness. The help of the California Wilderness Coalition would be very valuable. Could you give this your attention?

Thank you.

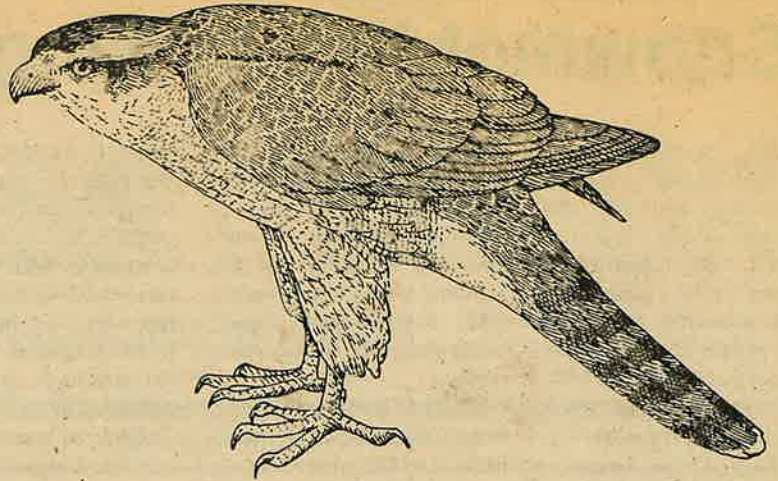
Ron Guenther



# Wilderness Wildlife

## The Goshawk

By Dennis Coules



Graphic by Ellen Blonder

The goshawk, *Accipiter gentilis*, ranges widely throughout the coniferous forests of California although it is nowhere common. It is the largest species of accipiter (or "true" hawk) in North America, and is noted for its aggressive behavior, both towards prey and towards humans who approach nests too closely. The goshawk reaches up to two feet in length with a four-foot wingspan, and is recognized by its long tail, rounded wings and blue-grey back with a whitish breast finely barred with grey. Immatures are more brown and more distinctly barred than adults. As with other accipiters, the front central toe is very long, an adaptation for grasping bird prey on the wing.

*Accipiter gentilis* is found throughout the northern temperate zone of North America, Europe and Asia, and related species are

found in the southern hemisphere. Within California, spring and summer populations are centered in higher altitudes of the northern third of the state and south along the Sierra Nevada to Kings Canyon National Park. Altitudes of known nesting localities range from 5,000 feet in Trinity County to 9,000 feet in Mono County. In the winter the goshawk may be found nearly throughout the state and frequently migrates downslope to areas of broken woodland.

Goshawk "invasions" have been noted in some areas, particularly the midwest. These have been hypothesized to result from declines in prey populations in the normal winter range of the birds.

Goshawks will take a wide variety of animal prey. In one study mammals in size range from chickarees to hares comprised 55 per cent of the diet and birds in size

from robins to grouse 45 per cent. Crows are an important prey species in some areas. Carrion or insects are rarely eaten. Their ability to take game birds has caused goshawks much persecution by humans, particularly in Europe.

In the forest the goshawk can rapidly pursue its prey through trees or bushes by closing its wings and steering itself with its outspread tail, even following the victim into a burrow or hole in a tree. Although it often takes prey on the wing, an animal that is resting on the ground, running or swimming may also be attacked. The prey is actually killed with the feet.

The goshawk is a "dainty" eater which always plucks the fur or feathers from its prey before eating it, unlike most other raptors. This plucking is often done at a favorite perch, usually only 2-6 feet high, and the pile of

remains beneath may be a tell-tale sign that a goshawk is in the area.

Nesting takes place in mature stands of coniferous forest, from the mixed-conifer zone to the lodgepole pine zone in the Sierra. In Oregon, old dense stands 100-150 years old are used for nesting. Large trees with large horizontal branches are required for the stick-platform nest, which is usually 20-80 feet above the ground. A most favorable nesting area would be a north slope near water, with a nearby meadow or other open area and snags for observation and prey-plucking posts. The nest may be used for several years. Peak of the breeding season is May to mid-July and the average clutch size

is three.

A long-term study of a nesting pair of goshawks near Donner Lake reported that the male was responsible for capturing 85 per cent of the food for the brood, but only the female fed the young. The female aggressively defended the nest area from human intruders, but the male showed little concern (one Forest Service publication recommends wearing of a hardhat when in the vicinity of a nest!). Nestling birds accounted for the largest part of the diet in this study, and they were observed searching in the grass of a small pond for hidden ducklings. Large prey animals were cached and fed upon by the male before being brought to the nest.

Threats to the continued existence of the goshawk include logging of nesting areas, robbing of nests by falconers or more general human disturbance at nest sites, and in some areas, continued persecution due to this species' predatory habits. The very small numbers of this raptor present in California certainly indicates a need to preserve all known nesting sites intact as well as to preserve potential nesting areas of mature conifer forest. Actions such as the establishment of wilderness areas in national forest areas otherwise vulnerable to clearcutting and other development would also benefit a wide variety of other wildlife species which depend on mature coniferous forests.

## Dams Along the Kern

### Dams in Domeland?

Last Fall, the U.S. Army Corps of Engineers began circulating draft alternatives and environmental analyses for building or enlarging one or more of six dams in the Kern River watershed. The study's stated purpose is to "determine the feasibility of supplemental storage in Isabella Lake for multiple purposes, including recreation..."

The developments being considered would have major impacts on the Corps' South Fork Wildlife Area, the North Fork Kern River (currently under study for Wild and Scenic status), the South Sierra addition to the Golden Trout Wilderness, and the Rockhouse Basin

area in the Woodpecker addition to the Domelands Wilderness.

Currently the Corps is focusing on the alternatives dealing with the management and/or enlargement of the existing Lake Isabella reservoir. Adjacent to the reservoir is the South Fork Wildlife Area, which contains over three hundred acres of prime riparian forest. The Area offers one of only two remaining habitats in California for the yellow-billed cuckoo (*Coccyzus americanus*), and is an integral part of the entire South Fork Kern River riparian forest which extends 12 miles up to the

Domelands Wilderness boundary.

The next planned opportunity for public comment will occur in July, when the Corps will hold a public hearing, probably in the Bakersfield area. **WHAT YOU CAN DO!**

Write to the Sacramento District Office, U.S. Army Corps of Engineers, 650 Capitol Mall, Sacramento, CA 95814, and ask that they keep you informed on future meetings and documents available for public review. Tell them you're concerned about the South Fork Wildlife Area, and the other areas in the Kern watershed which would be impacted by the

Two competing applications have been filed with the Federal Energy Regulatory Commission (FERC) in San Francisco to build a 16-foot high, earth-fill diversion dam on the South Fork of the Kern River in the proposed Domelands II Wilderness Addition.

Fluid Systems, Inc. of Santa Monica and the Kern Water Agency are proposing the dam as a part of a hydroelectric project which would divert the South Fork of the Kern through a three-mile tunnel and pipeline to produce approximately 42 megawatts annually. The total annual electrical generation for the state of California is reported to be

27,000 megawatts.

Also threatened are the wilderness values in the Domelands II area and the adjacent Wilderness itself. The Domelands II area of the RARE II process is included in the 1981 Burton Wilderness bill, H.R. 859. The dam, reservoir and intake structure, and the related construction activities would severely disrupt the undeveloped nature of the area. Also, when the reservoir is full, its waters could back up into the Domelands Wilderness.

In addition to the FERC application, the project proponents must obtain a preliminary permit from the Sequoia National Forest to conduct further geotechnical and engineering investigations. Access to the area, either across private lands or by helicopter will also have to be worked out. Under the terms of the California RARE II lawsuit, the Forest Service will not allow any new roads to be constructed.

potential dams. Also, more specific information on the South Fork riparian forest can be obtained from the Kern River Valley Audubon Society, P.O. Box 438, Wofford Heights, CA 93285.

generation.

The project is only in the earliest planning stages, but if constructed, it could have many adverse impacts on the lower South Fork watershed. These include disruption of the water supply for several miles of riparian forest, loss of habitat for two threatened species—the Mojave ground squirrel (*Citellus mohavensis*) and the yellow-billed cuckoo (*Coccyzus americanus*), loss of winter range for the Monache deer herd and loss or reduction of fish populations below the project.

The relatively low rate of runoff in the South Fork watershed means the Project will generate little if any power during the summer months when air conditioning demands require peak hydroelectric output. Rather, the power will be most likely produced in the seasons when hydropower is in much lower demand.

The relatively miniscule amount of power that could be generated raises the question of how important the benefits are when considering the costs of the lost wilderness, wildlife, riparian and other values. There is some concern that marginal projects, such as this one appears to be, may be pursued for energy tax credit benefits.

For more information on the issue as it develops, contact the South Fork Fish and Game Association, P.O. Box 951, Weldon, CA 93283, attention Dave Brown.

### California Wilderness Coalition

**Editor**  
Jim Eaton

**Contributors**  
Dave Brown  
Dennis Coules  
Archie Douglas  
Jim Eaton  
John Hooper

**Production**  
Archie Douglas  
Roger Lamoni

**Distribution**  
Tony Dirksen  
Jennifer Pullen

The **Wilderness Record** is the bi-monthly publication of the California Wilderness Coalition. Address all correspondence to: P.O. Box 429, Davis, CA 95616 (916) 758-0380. Articles may be reprinted. Credit would be appreciated.

#### Board of Directors

**President** - Bob Barnes  
**Secretary** - Steve Evans  
**Treasurer** - Wendy Cohen  
**Director** - Beth Newman  
**Director** - Bob Schneider  
**Director** - Richard Spotts  
**Director** - John Hooper

**Executive Director** -  
Jim Eaton

**Program Coordinator** -  
Archie Douglas

#### PURPOSES OF THE CALIFORNIA WILDERNESS COALITION

...to promote throughout the State of California the preservation of wild lands as legally designated wilderness areas by carrying on an educational program concerning the value of wilderness and how it may best be used and preserved in the public interest, by making and encouraging scientific studies concerning wilderness, and by enlisting public interest and cooperation in protecting existing or potential wilderness areas.

# Park Policy Reversed Snowmobiles in Kings Canyon

Under pressure from newly-appointed Interior Department officials, the National Park Service reversed an established tradition and issued a permit allowing snowmobiling within Kings Canyon National Park on March 21.

Assistant Secretary of the Interior-designate G. Raymond Arnett ordered

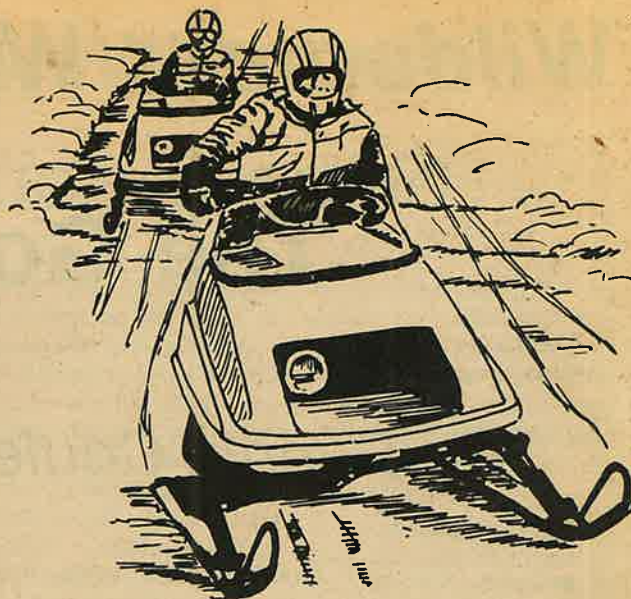
Western Regional Park Director Howard Chapman to issue a one-day "demonstration permit" allowing members of the militant Sierra Snowmobile Club to ride in the park, according to many news reports.

A Park Service spokesman described Arnett's note to Chapman as "a

coarsely worded" note, "to the effect if you value your job you'll do this (issue the permit)." Conservationists were shocked by Arnett's tone, adding that the use of fiat by a high-ranking Interior official to overturn established policy was unheard of.

Prior to issuance of the permit, Kings Canyon Park

Superintendent Boyd Evison had been preparing for a confrontation with the snowmobile club. 43 clubmembers had planned to participate in a "Ride for Our Rights" demonstration ride along the park's Panorama Point Road on March 21, and Evison assured them that park officials could not be expected to "roll over and play dead" while the law was being broken.



## Winter Sports Study

Despite another year of below normal snowpack, the Forest Service is reviewing studies for increased winter sports development and access on the Kern Plateau. Certain of these activities could have adverse impacts on the wildlife and winter solitude of the Domelands Wilderness.

The Sequoia National Forest continues to monitor snow accumulations in the Sherman Pass area where a downhill ski facility has been suggested for development many times over the past decade. At present, the Forest Service has no funds or plans to pursue the development, but is awaiting a private party to come forward and conduct the necessary feasibility studies which are the next step in the process. Development of any kind is

seen as being several years in the future.

However, a related planning process considering improved winter access to the Kern Plateau may accelerate interest in the Sherman Pass ski area. Local businessmen have proposed that the Forest Service assist in improving the roads and facilities which serve as access for the Plateau.

Currently under study are proposals to encourage increased snowmobile use, cross-country ski routes and other snow camping opportunities and facilities. The main access for these activities, coincidentally, is the road which leads up to Sherman Pass. Improvements in this road may spur development of the ski area, which, together with increased snowmobile use, may adversely impact the Woodpecker addition to the Domelands Wilderness.

The Forest Service is currently preparing an information sheet which will begin their planning on these winter activities and developments. Mike Henstra, President of the Kern Plateau Association has stated that it is very important for individuals and groups concerned with the wilderness and wildlife of the Kern Plateau to get involved in this process from the beginning. He asks that those concerned write to the District Ranger, Cannell Meadows Ranger District, P.O. Box 6, Kernville, CA 93238, and ask to be placed on the mailing list for the initial information sheet and forthcoming environmental assessments. Additional information can be obtained by writing to the Kern Plateau Association, P.O. Box 858, Kernville, CA 93238, or to the Coalition.

Then came Arnett's order—issued on his authority as chief executive for fish, wildlife, and parks—which defied a long-standing Western Regional policy banning the use of snowmobiles and other off-road vehicles in any of the parks and other units administered by the Park Service in the four-state region.

Snowmobilers and the Park Service have been arguing over the restriction since 1974, when it was first imposed in the Western Region. Park officials and conservationists claim that use of the machines is inappropriate in the parks,

saying that the vehicles can be damaging to the environment.

Bud Weber, president of the Sierra Snowmobile Club, claims that snowmobilers have suffered "regional discrimination" in California, since 17 other national parks allow the vehicles.

According to California Wilderness Coalition President Bob Barnes, Weber's logic "typifies the sort of argument you get from groups who can't believe that their environmentally-destructive pastime isn't in the best interest of the public.

"Sure, they've been

discriminated against," said Barnes, "thereby joining the loggers, miners and other destructive elements who have traditionally been barred from our national parks."

Weber indicated his hope that the recently-issued permit represents a new attitude toward snowmobiling on the part of the Park Service. Barnes pointed out that Park Service policy has not yet changed and voiced his concern over what he perceives as interference in the agency's affairs by Arnett and other political appointees, notably Interior Secretary James Watt.

## CWC Member Groups

CWC Member Groups:

- American Alpine Club
- Bay Chapter, Sierra Club
- Butte Environmental Council
- California Native Plant Society
- Citizens to Save Our Public Lands
- Citizens for Mojave National Park
- Concerned Citizens of Calaveras County
- Defenders of Wildlife
- Desert Protective Council
- Earth Ecology Club
- Ecology Center of So. California
- Friends of the Earth
- Friends of the River
- Friends of the River Foundation

- Golden Gate Environmental Law Society
- Granite Chief Task Force
- Greenpeace
- Ishi Task Force
- Island Foundation
- Kern Plateau Association
- Knapsack Section, Bay Chapter, Sierra Club
- Lake Tahoe Audubon Society
- Loma Prieta Chapter, Sierra Club
- Mendocino Environment Center
- Mono Lake Committee
- Mt. Shasta Resources Council
- NCRCC Sierra Club
- Northcoast Environmental Center
- Northeast Californians for Wilderness

- Northstate Wilderness Committee
- The Red Mountain Association
- Salmon Trollers Marketing Association
- San Joaquin Institute for Environmental Action
- San Joaquin Wilderness Association
- Sierra Association for Environment
- Sinkyone Council
- Siskiyou Mountains Resource Council
- Sonoma County Ecology Center
- South Fork Fish and Game
- South Fork Trinity Watershed Association
- South Fork Watershed Association
- Trinity Alps Group

## CWC Business Sponsors

... Like any citizen organization, California Wilderness Coalition depends on sponsorship and support. The organization is grateful to the following businesses that have been able to see beyond just selling their products to the great need to preserve the wilderness in which their products are used.

**Antelope Camping Equipment Mfg. Co.**  
21740 Granada Ave.  
Cupertino, CA 95014  
(408) 253-1913

**Ace Family Hardware-Kauai**  
4018 Rice St.  
Lihue, Hawaii 96766

**The Alpine Supply Co.**  
130 G Street  
Davis, CA 95616  
(916) 756-2241

**Daybell Nursery**  
55 N.E. Street  
Porterville, CA 93257  
(209) 781-5126

**Echo, The Wilderness Co.**  
6505 Telegraph Ave.  
Oakland, CA 94609  
(415) 658-5075

**Earth Integral, Inc.**  
2655 Portage Bay Ave.  
Davis, CA 95616  
(916) 756-9300

**Four Seasons Sports**  
410 Redwood  
Oakland, CA 94619

**Mammoth Maintenance Service**  
P.O. Box 155  
Mammoth Lakes, CA 93546  
(714) 934-8616

**The Mountain Shop, Inc.**  
228 Grant Ave.  
San Francisco, CA 94108  
(415) 362-8477

**The Naturalist**  
219 E Street  
Davis, CA 95616  
(916) 758-2323

**The North Face**  
1234 Fifth Street  
Berkeley, CA 94710  
(415) 548-1371

**San Francisco Travel Service**  
728 Montgomery St.  
San Francisco, CA 94111  
(415) 991-6640

**Bob Schneider, Contractor Solar Homes**  
2402 Westemesse Road  
Davis, CA 95616  
(916) 758-4315

**Ski Hut**  
1615 University Ave.  
Berkeley, CA 94704  
(415) 843-6505

**Solano Ski Sport**  
1215 Tabor Ave.  
Fairfield, CA 94533  
(707) 422-1705

**Wilderness Press**  
2440 Bancroft Way  
Berkeley, CA 94704  
(415) 843-8080

**Wildflower Farms Native Plant Nursery**  
1831 Terrace Place  
Delano, CA 93215

**Zoo-Ink Screen Print**  
2415 Third St., No. 270  
San Francisco, CA 94107  
(415) 863-1207

California Wilderness Coalition, P.O. Box 429, Davis, CA 95617

Yes I wish to become a member of the California Wilderness Coalition. Enclosed is \$ \_\_\_\_\_ for first-year membership dues.

Here is a special contribution of \$ \_\_\_\_\_ to help with the Coalition's work.

NAME \_\_\_\_\_

ADDRESS \_\_\_\_\_

ZIP \_\_\_\_\_

ANNUAL DUES:  
Note: two dollars of annual dues supports the Wilderness Record

Individual	\$ 10
Low-income individual	5
Patron	500
Non-profit organization	30
Sponsor (business)	30

tax deductible